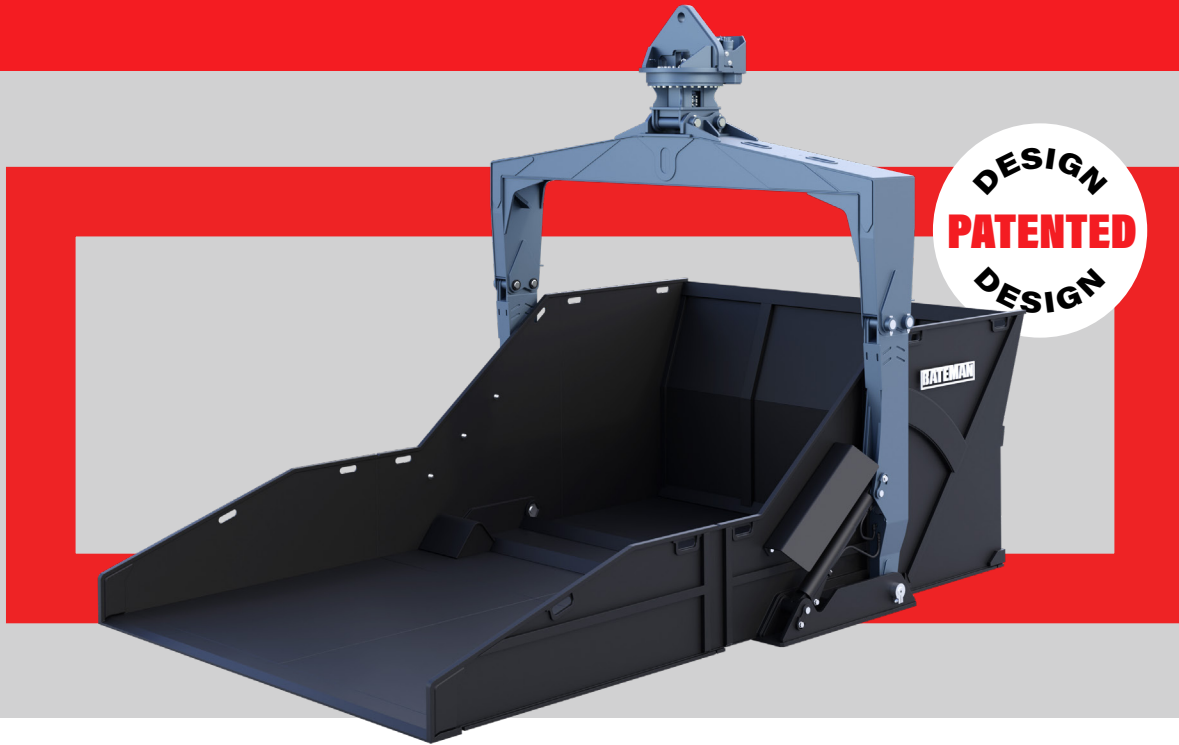


MATERIAL HANDLING SKIP PAN



The Bateman material handling skip pan is packed with features to boost productivity, safety, and efficiency. Its 360-degree continuous rotation gives operators unmatched maneuverability in tight or hard-to-reach areas. Plus, it's built for full truck access—allowing direct unloading right into the pan for faster, smoother operations, and no spilling.

**360° Continuous
Rotation Capability.**

**Dual Motor Rotator, Ensuring
Smooth and Seamless
Rotation.**

**Constructed From Abrasive-
Resistant Materials.**

45° Dumping Angle.

**Equipped With Two 6" Cylinders,
Providing the Necessary
Power and Stability to
Handle Heavy Loads.**



**SCAN TO VIEW
OUR SKIP PAN
IN ACTION.**

