

# BATEMAN

A GRYB COMPANY

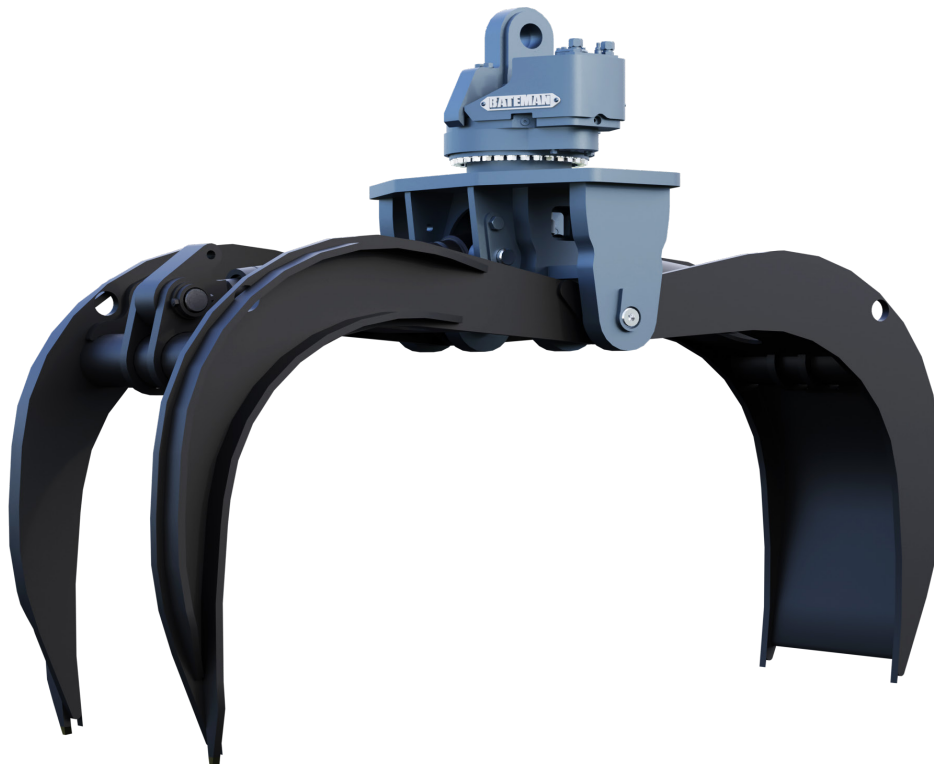
**24**  
hours

ALL PARTS AVAILABLE  
WITHIN 24 HOURS.

WARRANTY  
**2**  
YEAR

2 YEAR/3,000  
HOURS WARRANTY.

## COMBINATION HD BYPASS GRAPPLE BCG-BP-HD MODELS



### CONTACT US

(705) 487-5020

BATEMANMANUFACTURING.COM

MAIL@BATEMANMANUFACTURING.COM

# WORK WITH CONFIDENCE

CUSTOM ATTACHMENT SOLUTIONS AVAILABLE TO MEET YOUR UNIQUE SPECIFICATIONS/APPLICATIONS. WE RESERVE THE RIGHT TO CHANGE SPECIFICATIONS AND TO IMPROVE OUR PRODUCTS WITHOUT NOTICE OR OBLIGATION.

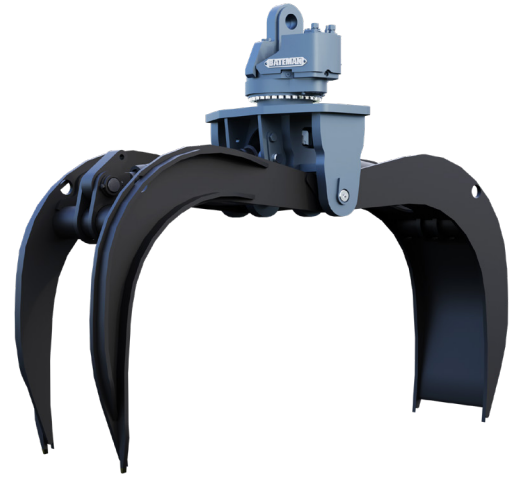
# COMBINATION HD BYPASS GRAPPLE

## BCG-BP-HD MODELS

2 YEAR/3,000 HOURS  
WARRANTY 

ALL PARTS AVAILABLE  
WITHIN 24 HOURS 

The BATEMAN Combination HD Grapple is designed and ideal for heavy-duty forestry applications such as handling trees and logs.



	BCG-BP-068HD	BCG-BP-076HD	BCG-BP-082HD	BCG-BP-090HD	BCG-BP-102HD	BCG-BP-112HD	BCG-BP-120HD	BCG-BP-128HD	BCG-BP-136HD
<b>Machine Class</b>	5t - 10t	5t - 50t	5t - 50t	5t - 50t	5t - 50t	5t - 150t	18t - 150t	18t - 150t	18t - 150t
<b>Max. Opening in (mm)</b>	68 (1,727)	76 (1,930)	82 (2,083)	90 (2,286)	102 (2,591)	112 (2,845)	120 (3,048)	128 (3,251)	136 (3,454)
<b>Min. Opening in (mm)</b>	6 (152)	6 (152)	6 (152)	7 (178)	9 (229)	10 (254)	11 (279)	12 (305)	12 (305)
<b>Area Tip-To-Tip ft.<sup>2</sup> (m<sup>2</sup>)</b>	6.5 (0.6)	7.9 (0.7)	8.7 (0.8)	11 (1)	13.5 (1.25)	16.25 (1.5)	19 (1.8)	21.5 (2)	27 (2.5)
<b>Volume in Cord 8ft. (m<sup>3</sup>)</b>	0.41 (0.46)	0.49 (1.77)	0.54 (1.93)	0.68 (2.45)	0.84 (3.04)	1.02 (2.80)	1.2 (4.30)	1.35 (4.84)	1.69 (6.1)
<b>Cylinder Size in (mm)</b>	3.5 (89)	3.5 (89)	3.5 (89)	3.5 (89)	3.5 (89)	4.00 (102)	4 (102)	4 (102)	5 (127)
<b>Cylinder Max. Pressure PSI (bar)</b>	3,000 (207)	3,000 (207)	5,000 (345)	5,000 (345)	5,000 (345)	5,000 (345)	5,000 (345)	5,000 (345)	5,000 (345)
<b>Weight lb (kg)</b>	1,210 (549)	1,305 (592)	1,710 (776)	2,175 (987)	2,325 (1,055)	3,375 (1,531)	3,375 (1,531)	4,600 (2,087)	4,800 (2,177)